



## JUBO® VEHICLE WASH SYSTEM CATALOG V202202

Self-Serve In-Bay Car Wash

Touchless Car Wash System

Wash Gantry

Wash Tunnel

Wash Bus&Truck

Plastic belt conveyor



Innovative vehicle wash system manufacturer - JUBO®

[www.juboinc.com](http://www.juboinc.com)

JUBO® VEHICLE WASH SYSTEM CATALOG V202202

## Self-Serve Wash System

Model: SS, Type: In-bay manual self serve (IBM Self-Serve)



### Description

SIMPLE, SATISFIED, SOPHISTICATED!

SELF-SERVICE CAR WASH SYSTEMS: SOPHISTICATED CAR WASH FOR YOUR SUCCESSSELECTIVE FUNCTIONS, MODULAR CONFIGURABLE EQUIPMENT – JUBO SS  
Modular system: Function modularity & Structure modularity

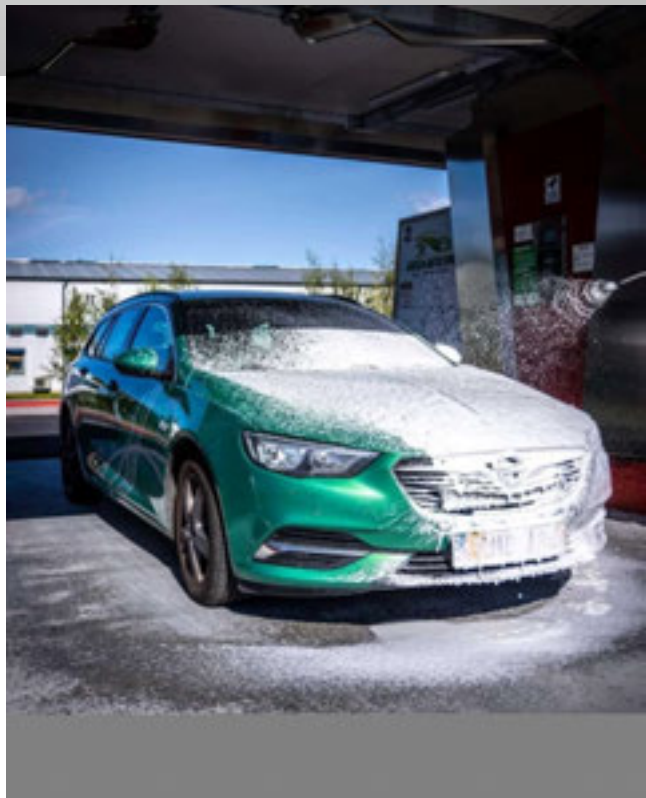
### Optimal energy efficiency

Pole-changeable and water-cooled pumps use their waste heat to heat the wash water. This reduces energy consumption; the environment is sustainably protected and your operating costs are reduced.

### Highly reliable

Pneumatic technology is applied in both dosing system and foaming system. With the pressurized air power, ensuring dosing pumps' adjustment of the dosing amount through lift and stroke, ensuring precise dosage and process reliability.

JUBO® VEHICLE WASH SYSTEM CATALOG V202202



This also means that smooth operation is guaranteed at every wash bay, even for busy timespan.

#### **Foam system**

The water-saving foam system powered by mixed liquid & pneumatic technology. This can be adjusted by the air and liquid input volume and pressure. Which is reliable and high efficient.

#### **Tested Guarantee**

The JUBO high-quality components undergo a comprehensive functional test in the factory. Only if these tests are passed, we attach the durable components to the machine for customers.

#### **Functions**

JUBO SS SELF SERVE CAR WASH – Semi automatic car wash system, combined with functions of HP Water, Foam Brush, HP Wax, Dryer, Vacuum, Presoak(optional), Tire Cleaner(optional), Wheel and Chrome(optional), Bug Remover(optional), Soap(optional) etc.

#### **Features**

- HP Water, High pressure water washing around the vehicle
- Foam Brush, A fine soft paint-protective brush with foam come out from the central of the brush, low pressure
- HP Wax, A high-pressure wax applied from the HP lance, either high pressure or low pressure configurable
- Dryer, A dry blade supported with strong turbo impeller applied to dry the car without fabric touch on the paint.
- Vacuum, Industrial dry&wet vacuum equipped to multi-purpose absorb tasks for interior cleaning
- Presoak(optional), Chemical presoak applied to entire vehicle from bottom to top by low pressure lance, low pressure
- Tire Cleaner(optional), Apply cleaner to dry tires for best results, low pressure
- Wheel and Chrome(optional), Apply cleaner to dry wheels for best results, low pressure
- Bug Remover(optional), Apply to grill, windshield, and vehicle front to help remove bugs, low pressure
- Soap(optional), Apply to entire vehicle from bottom to top, low pressure
- Spray Wax(optional), Apply to painted surface, low pressure
- Clear Coat Protectant(optional), Apply to painted surface, low pressure
- Spot-Free Rinse(optional), Apply spot-free rinse as a final rinse, high pressure
- Others(optional), Welcome for more washing processes requirements , negotiable and configurable



## Specifications

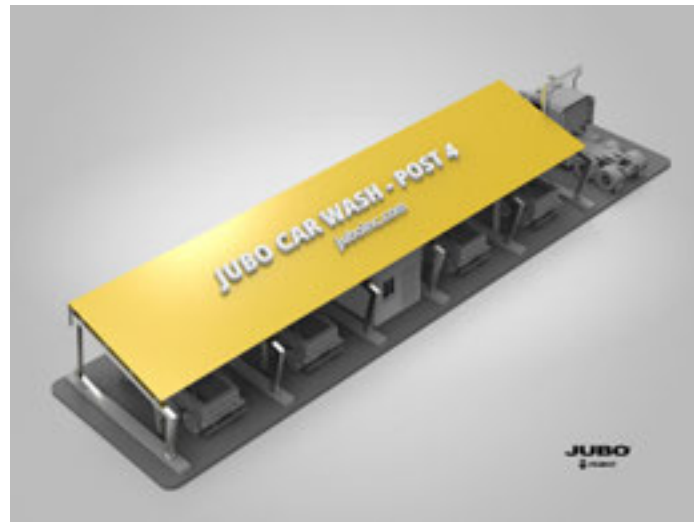
Electricity and power supply	3PHASE 380V 50HZ 5.5kW, 15A 3PHASE 220V 60HZ 5.5kW, 25A
Electrical system	French Schneider
Min installation dimensions	L2000 x W800 x H 1600 L6.7 x W2.7 x H5.5ft
Max washing vehicle dimensions	No limit
Material	Hot dipped galvanized steel, Stainless steel 304
Water pressure	100~250Bar, 14~18L/min adjustable
Dryer	2.2kw x 1 = 3HP x 4
Hot water	Max 60 Celsius
Drive system	Timing transmission + VFD
Control system	TAIWAN DELTA PLC
Wash speed	2-8minutes/car, adjustable
Chemical consumption	0.02~0.08L/car, adjustable

## Deployment

Deployed for outdoor wash stations or single in-bay wash store, several self-serve wash bays and single automatic car wash system will be a good idea to work together.

## Application

- Bicycle
- Motor-bike
- Mini
- Sedan
- SUV
- MPV
- Pickup-Truck
- Vans
- Bus
- Truck
- Fleet
- Trailor
- Military vehicles





## TOUCHLESS CAR WASH SYSTEM

Model: JUBO360, Type: In-bay automatic touchless (IBA Touchless)



### Description

Higher Quality + Increased Revenue + Reduced Costs = Better Return!

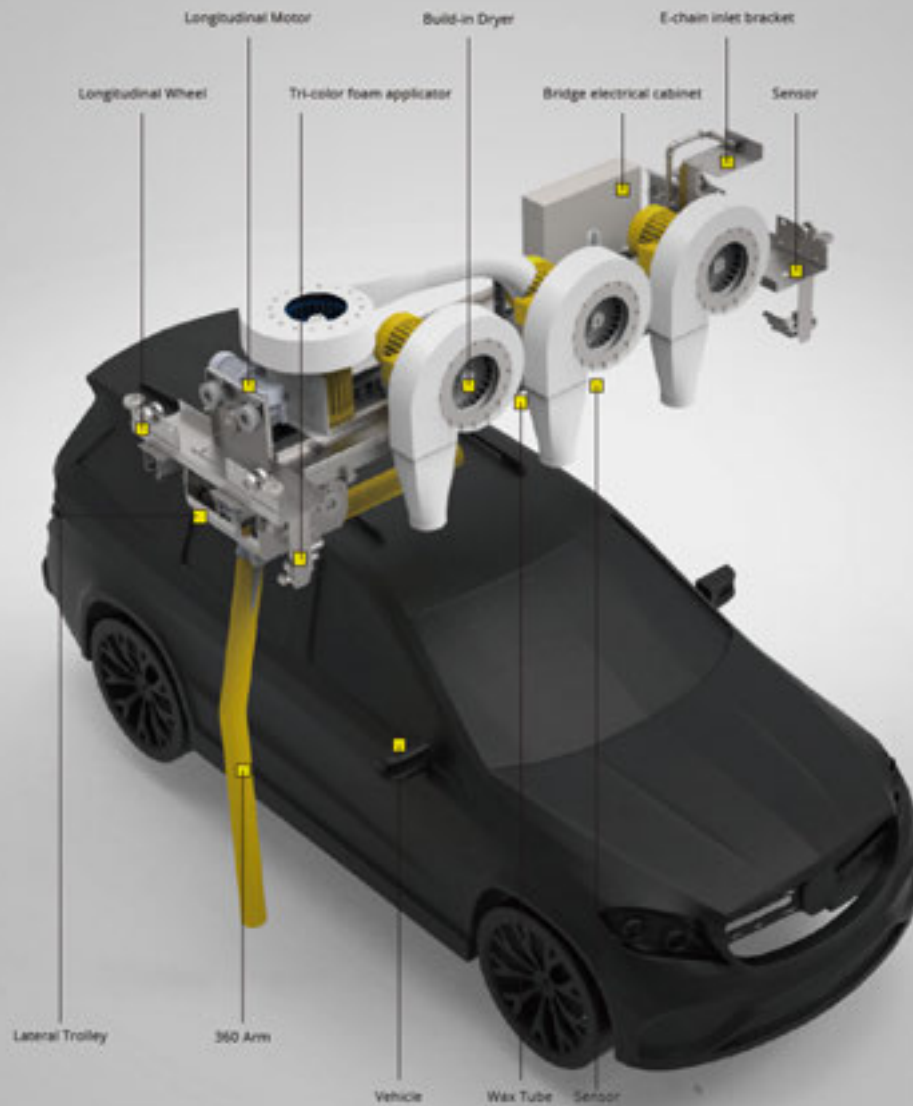
JUBO360 has been long-term improved in in-bay automatic vehicle wash industry.

JUBO is dedicated to providing wash operators with the most simple, sophisticated, innovative equipment with features of Performance, Reliability and Quality.

The JUBO360 raises the standard again with new revenue-enhancement features and total cost-of-ownership improvements that offers wash owners the opportunity to own a consistent revenue-create car wash machine.

JUBO 360, Automatic car wash system, Touchless vehicle wash system, High-pressure wash system, with sector nozzles on 360 spray arm to form a high-pressure water blade to clean vehicles (mini, sedans, SUV, MPV etc.) – Combined with functions of HP Chassis wash, HP 360 wash, tri-color foam, Pre-soak, Hot wax, Spotless water, Dryer.

JUBO® VEHICLE WASH SYSTEM CATALOG V202202



## Features

- Anti-corrosive Hot-dipped galvanized steel & Stainless-steel material
- Corrosion-Resistant Bridge & Trolley
- Smart 360 Technology (with: Smart Networking, Smart Dwell)
- Automatic Obstacle Guidance
- In-Bay LED screen indicator
- Pump Station
- Smart Arch Control, Smart Drying System and Smart Cleaning System
- Virtual Treadle
- Electrical Control Panels
- LED Lavafall
- Anti-corrosive metering pump
- Fully Loaded E-Chain & Bulkhead Manifold
- Ultimate Cover Package

- Advanced Arch Package
- Electric High Pressure Gatling Guns
- High Pressure Side Combo Blasters
- Free Standing Frame
- Spot Free Rinse Application
- Wash Activation Entry Terminals
- High Pressure Rinse Arch



### Specifications

Electricity and power supply	3PHASE 380V 50HZ 25kW, 66A 3PHASE 220V 60HZ 25kW,115A
Electrical system	French Schneider
Min installation dimensions	L8000 x W3700 x H 3500mm L26.3 x W12.2 x H11.5ft
Max washing vehicle dimensions	L6000 x W2100 x H2100mm L20 x W7 x H7ft
Material	Hot dipped galvanized steel, Stainless steel 304
Water pressure	100~130Bar
Dryer	5.5kw x 4 = 7.5HP x 4
3D Detecting system	German Pepperl+Fuchs ultrasound
Drive system	Timing transmission + VFD
Control system	TAIWAN DELTA PLC
Wash speed	2-8minutes/car, adjustable
Chemical consumption	0.02~0.08L/car, adjustable

## Deployment

Deployed for outdoor wash stations or single in-bay wash store, several self-serve wash bays and single automatic touchless car wash system will be a good idea to work together. Steel frame or wall mounted both works.



## Application

- Mini
- Sedan
- SUV
- MPV
- Pickup-Truck





## TOUCHLESS CAR WASH SYSTEM

Model: PARVUS, Type: Type: In-bay automatic touchless (IBA Touchless)



### Description

Economic, simple, easy!

PARVUS is new simple standard in in-bay automatic touchless car wash system.

PARVUS support lower ceiling in-door room, providing wash operators with the most simple, easy, stable equipment with features of Beauty, Reliability and Quality.



### Specifications

Electricity and power supply	3PHASE 380V 50HZ 15kW
Electrical system	French Schneider
Min installation dimensions	L6500 x W3200 x H 3050mm
Max washing vehicle dimensions	L5500 x W2600 x H2100mm
Material	Hot dipped galvanized steel, Stainless steel 304
Water pressure	50~80Bar
Parking detection system	Infrared ray
Drive system	VFD
Control system	TAIWAN DELTA PLC
Wash speed	2-8minutes/car, adjustable
Chemical consumption	0.02~0.08L/car, adjustable
Dryer	Optional

### Deployment

Deployed for outdoor wash stations or single in-bay wash store, several self-serve wash bays and single automatic touchless car wash system will be a good idea to work together. Steel frame or wall mounted both works.



#### Application

- Mini
- Sedan
- SUV
- MPV
- Pickup-Truck



## Wash Gantry

Model: ROSE, Type: Rollover automatic friction car wash



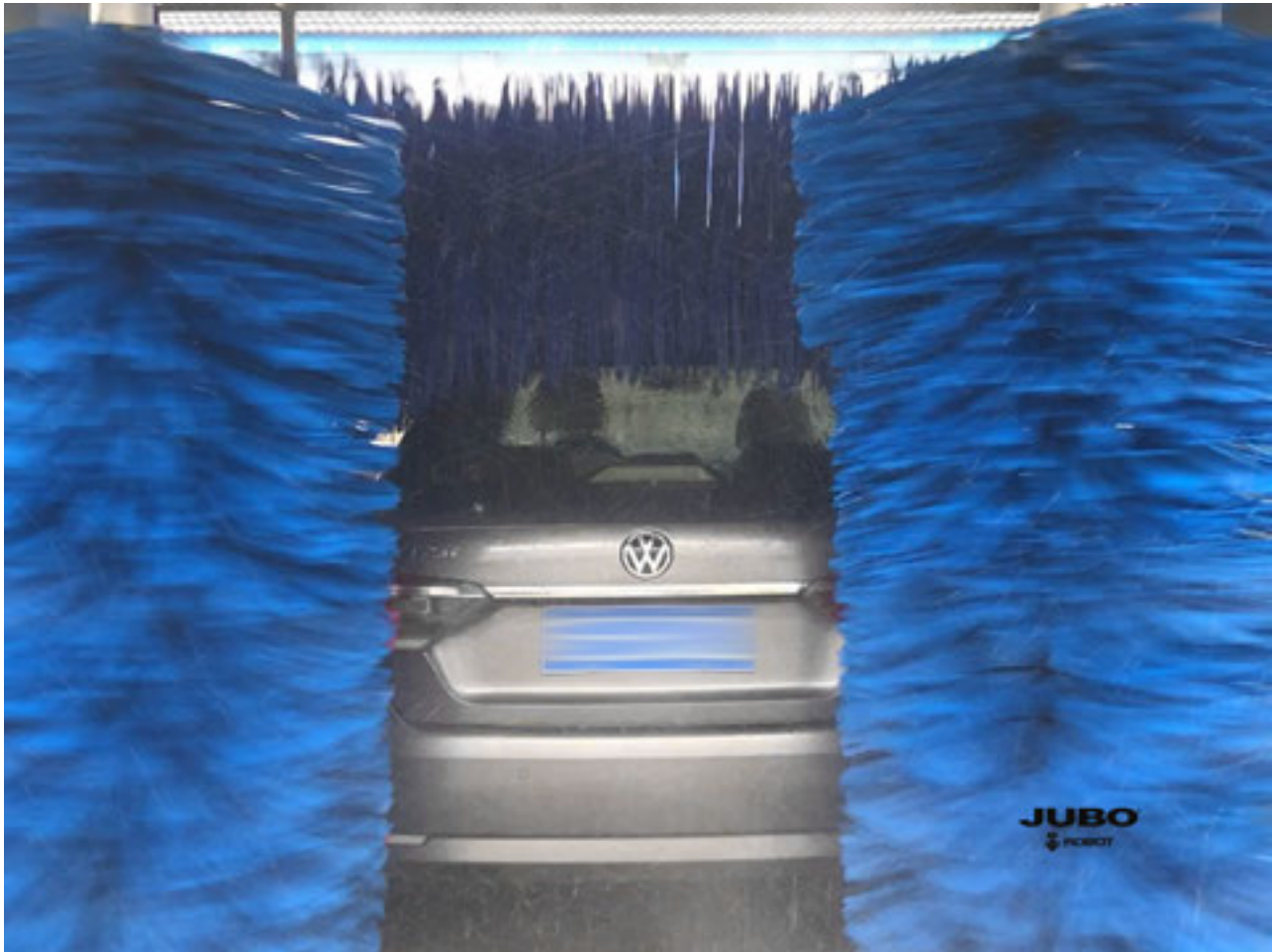
Fast, quiet, safe and reliable wash gantry - rollover car wash - JUBO  
JUBO wash gantry with standard 5 brushes spinning and cleaning  
the vehicle while the rollover gantry moving forward and backward,  
at highest speed 3 minute to wash a car, power 0.1KWH and  
60L water consumed.

Throughput, thanks to the adjustable gantry walking motor  
controlled by VFD, JUBO wash gantry can wash  
from 15-30 cars per hour.

JUBO® VEHICLE WASH SYSTEM CATALOG V202202



## Description



JUBO WASH GANTRY, Automatic car wash system, 5 brushes friction vehicle wash system, with splendid turnover, Super-Fast, Excellent wash result features, combined with functions of HP Rinse arc, Side brushes, Top brush, Vertical brushes Soap Wax Arc, Spotless Arc, Dryer Arc, etc.

Wheelmaster optional

Lavafall is optional

Plastic belt conveyor is optional

## Features

- Lava-foam, led color-lightened foam liquid falling to the whole car
- Presoak, mud bug and dirties removal chemicals applied with dwell time
- HP Rinse, High pressure water washing around the vehicle removing all heavy solids
- Wheelmaster, wheel brushes system washes the wheels and tires by elbow stretching technology
- Soft cloth brush, A fine soft paint-protective brush gently spinning with foamy water and fraction
- HP Wax, A high-pressure wax applied from the HP lance, either high pressure or low pressure configurable
- Spot-Free Rinse, Apply spot-free rinse as a final rinse
- Dryer, 5.5kw powerful dryers supported with strong turbo impeller to dry the car without fabric touch on the paint.
- Anti-collision design, virtual eyes washing there to avoid collision accident

JUBO® VEHICLE WASH SYSTEM CATALOG V202202

## Specifications

Electricity and power supply	3PHASE 380V 50HZ 25kW, 66A 3PHASE 220V 60HZ 25kW, 115A
Electrical system	French Schneider
Min installation dimensions	L11000 x W4200 x H3500mm L36 x W14 x H12ft
Max washing vehicle dimensions	L6000, x W2600 x H2100mm L20 x W9 x H6.5ft
Material	Hot dipped galvanized steel, Stainless steel 304
Pump	Centrifugal Pump 150L/min 7.5kW = 10HP
Water pressure	20~30Bar, 130L/min adjustable
Dryer	5.5kw x 4 = 7.5HP x 4
Conveyor system(Optional)	Steel conveyor + VFD Flat plastic belt conveyor + VFD (optional)
Control system	French Schneider PLC
Wash speed	3-5minutes/car, adjustable
Chemical consumption	0.02~0.08L/car, adjustable

## Deployment

Deployed for Chain-business Wash Stations, City Center Wash fleet, outdoor wash stations or near to fuel stations, ideal to make coffee and super-market to enhance revenue, several self-serve wash bays and wash gantry systems will be a good idea to work together. Steel rail is included.

## Application

- Mini
- Sedan
- SUV
- MPV
- Pickup-Truck





## Wash Gantry

Model: RONA, Type: Rollover automatic friction car wash



Unattended grade Fast, quiet, safe and reliable **wash gantry** - rollover car wash - JUBO  
JUBO wash gantry RONA with standard 5 brushes spinning and cleaning, proudly to  
announce special **SOFTTOUCH** and **CLEANTOUCH** and **ONE-CHEM** technologies,  
the rollover car wash machine technical level get another high end.

Thanks to the JUBO cut-edge innovations on the brushes material, now the improved  
cleanness grade cater for high-level requirements from the market.

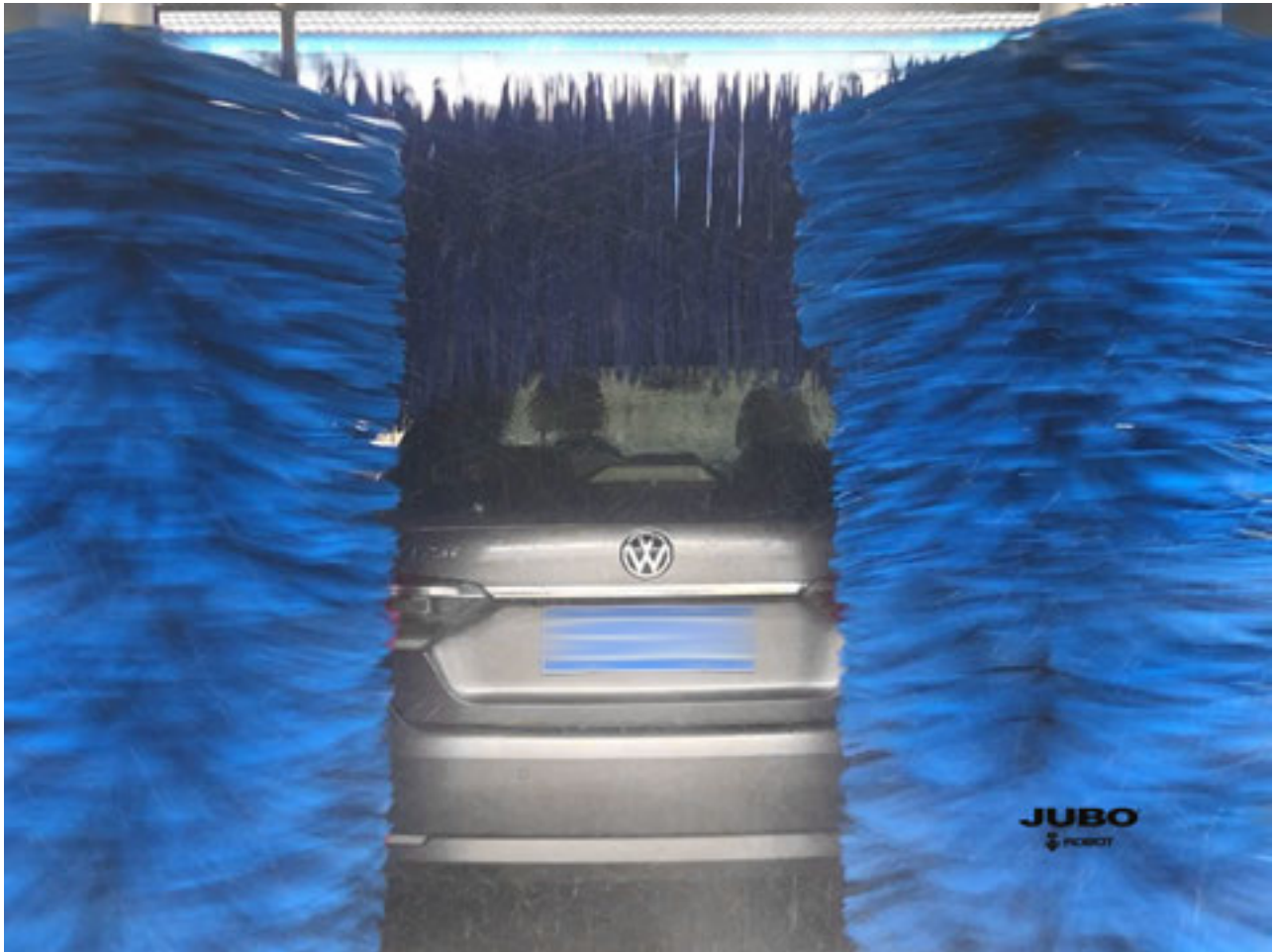
Thanks to the JUBO chemical department, the ON-CHEM shampoo formular make the car wash shorter time and shinning result, painting  
protection is in high-light catching eyes.

Unattended technology occupied highest speed 3 minute to wash a car, power0.1KWH and 60L water consumed.

Spinning nozzles, water-proof motors, centrifugal pumps, 7.5kw strong blowers equipped.



## Description



RONA WASH GANTRY, Automatic car wash system, 5 brushes friction vehicle wash system, with splendid turnover, Super-Fast, Excellent clean result features

## Features

- **SOFTTOUCH** for top and side brushes by elbow stretching technology
- **CLEANTOUCH**, A fine soft paint-protective brush gently spinning amid high-level cleanness.
- **ONE-CHEM**, A high-pressure shampoo wax applied from the HP nozzles, high pressure
- **Dryer**, 7.5kw powerful dryers supported with strong turbo impeller to dry the car without fabric touch on the paint.



## Specifications

Electricity and power supply	3PHASE 380V 50HZ 25kW
Electrical system	French Schneider
Min installation dimensions	L12000 x W3800 x H3500mm L36 x W14 x H12ft
Max washing vehicle dimensions	L6000, x W2600 x H2100mm L20 x W9 x H6.5ft
Material	Hot dipped galvanized steel, Stainless steel 304
Pump	Centrifugal Pump 150L/min 7.5kW = 10HP
Water pressure	20~30Bar, 180L/min adjustable
Dryer	7.5kw x 2
Control system	French Schneider PLC
Wash speed	5.5minutes/car, adjustable
Chemical consumption	0.02~0.08L/car, adjustable

## Deployment

Deployed for Chain-business Wash Stations, City Center Wash fleet, outdoor wash stations or near to fuel stations, ideal to make coffee and super-market to enhance revenue, several self-serve wash bays and wash gantry systems will be a good idea to work together. Steel rail is included.

## Application

- Mini
- Sedan
- SUV
- MPV
- Pickup-Truck

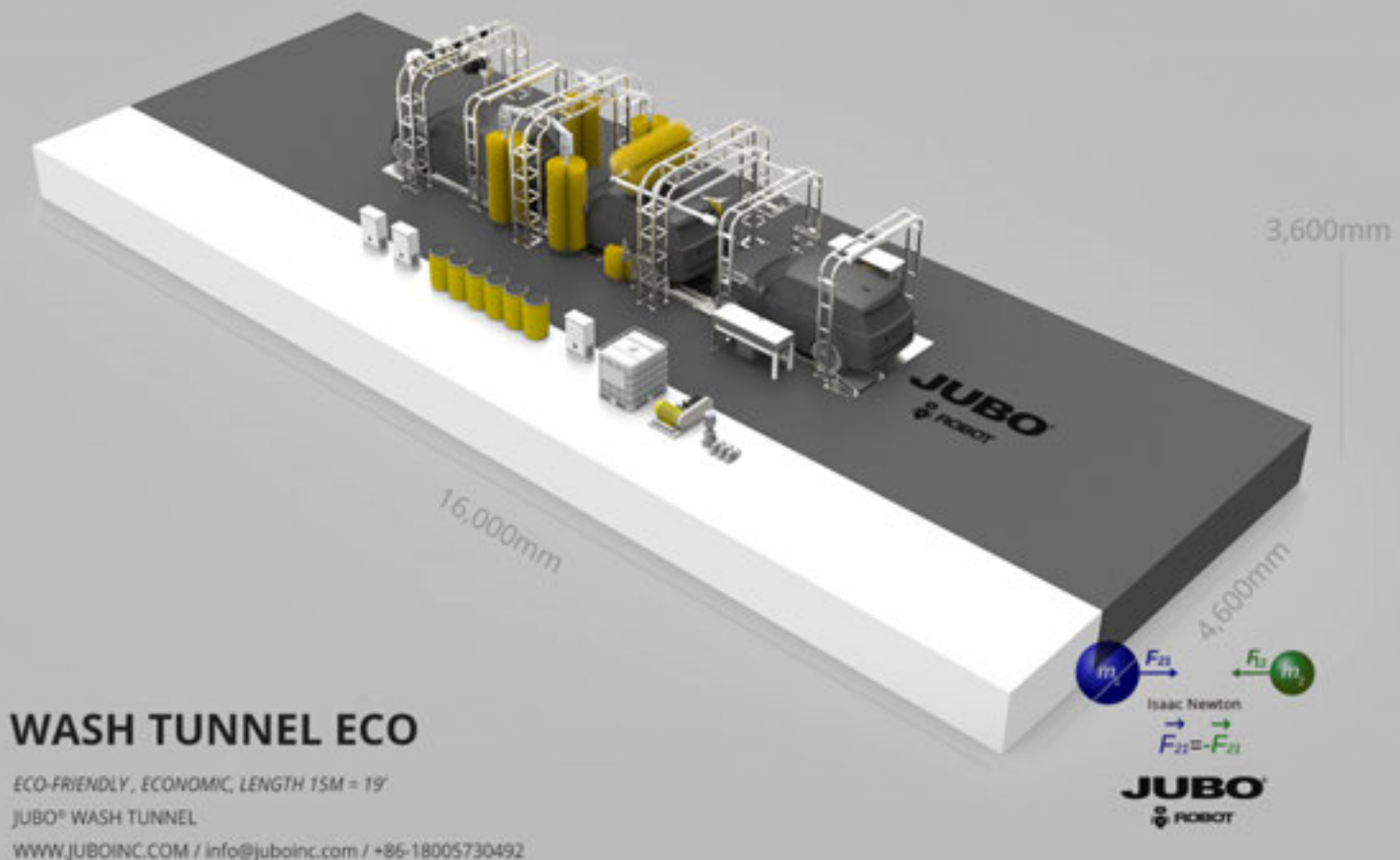


## Delivery



## Wash Tunnel

Model: ECO, Type: Tunnel automatic friction express



### Description

Fast, quiet, safe and reliable tunnel car wash

JUBO automatic friction express car wash tunnel with standard 9 brushes spinning and allow 3 cars washing in a tunnel, at highest speed 1 minute to wash a car, power 0.1KWH and 30L water consumed.

Throughput, thanks to the adjustable conveyor motor controlled by VFD, JUBO Express tunnel car wash can wash from 30-60 cars an hour.







JUBO WASH TUNNEL, Automatic car wash system, Conveyorized car wash system, Brush touch vehicle wash system, with splendid turnover, Super-Fast, Excellent wash result features, combined with functions of HP Chassis wash & HP Rinse arc, Wheel brushes, Side brushes, Top brush, Vertical brushes, Lava-Foam, Tri-color foam, Soap Arc, Hot Wax Arc, Spotless Arc, Dryer Arc, etc.  
Standard configured by steel conveyor, plastic belt conveyor is an high-end option available.





## Features

- Lava-foam, led color-lightened foam liquid falling to the whole car
- Presoak, mud bug and dirties removal chemicals applied with dwell time
- HP Water, High pressure water washing around the vehicle removing all heavy solids
- Wheelmaster, wheel brushes system washes the wheels and tires by elbow stretching technology
- Soft cloth brush, A fine soft paint-protective brush gently spinning with foamy water and fraction
- HP Wax, A high-pressure wax applied from the HP lance, either high pressure or low pressure configurable
- Spot-Free Rinse, Apply spot-free rinse as a final rinse
- Dryer, 5.5kw powerful dryers supported with strong turbo impeller to dry the car without fabric touch on the paint.
- Anti-collision design, virtual eyes washing there to avoid collision happening due couple of vehicles washing in the tunnel



### Specifications

Electricity and power supply	3PHASE 380V 50HZ 65kW, 110A
Electrical system	French Schneider
Min installation dimensions	L16000 x W4600 x H3600mm
Max washing vehicle dimensions	L16000, x W2600 x H2350mm
Material	Hot dipped galvanized steel, Stainless steel 304
Pump	HP pump piston 130L/min 22kW = 30HP, LP pump centrifugal 150L/min 7.5kW = 10HP
Water pressure	100~130Bar, 130L/min adjustable
Dryer	5.5kw x 4 = 7.5HP x 4
Conveyor system	Steel conveyor + VFD, Flat plastic belt conveyor + VFD (optional)
Control system	TAIWAN DELTA PLC
Wash speed	1-3minutes/car, adjustable
Chemical consumption	0.02~0.08L/car, adjustable





### Deployment

Deployed for Chain-business Wash Stations, City Center Wash fleet, outdoor wash stations or near to fuel stations, ideal to make coffee and super-market to enhance revenue, several self-serve wash bays and single automatic tunnel car wash system will be a good idea to work together. Steel frame is necessary to support the components.

### Application

- Mini
- Sedan
- SUV
- MPV
- Pickup-Truck

## Wash Bus&Truck

Model: ROPRE, Type: Tunnel automatic touchless express



### Description

#### DRIVE-THROUGH VEHICLE WASH SYSTEMS

From pre-wash to rinse, our high-powered, high-pressure automatic truck washing systems offer heavy-duty cleaning power with the quickest wash cycles on the market.

Drive-through systems use a combination of wash detergents, high-volume, low-pressure jets, and high-pressure washers. JUBO automatic truck washing systems can be touchless, equipped with brushes, or both to meet the unique washing needs of your fleet.

JUBO BUS&TRUCK, Automatic truck wash, bus wash, fleet wash system, Railed or Fixed vehicle wash system, Touchless or Brush Touch vehicle wash system, with good turnover, effortless, excellent wash result features.

### Touchless Type

Advanced brushless wash systems provide the ultimate, scratch-free cleaning experience for all kinds of vehicles, especially those with hard-to-reach places. The heavy-duty cleaning power of our conventional flat spray, spinners, and solid stream nozzles are configured to power away dirt, grime, salt, and other corrosives quickly and efficiently. This pressure washing system is ideal for large vehicles with irregular shapes, including Tire and Chassis wash.

Combined with functions of HP Chassis wash & HP Rinse arc, Top brush, Vertical brushes, Lava-Foam(optional), Tri-color foam(optional), Soap(optional), Hot Wax(optional), Spotless(optional), Dryer(optional), etc.





### Fixed Type

Combined with functions of Vertical brushes, Top brush, Lava-Foam(optional), Tri-color foam(optional), Soap(optional), Hot Wax(optional), Spotless(optional), Dryer(optional), Dryer(optional), etc.

### Gantry Type

Combined with functions of HP Chassis wash & HP Rinse arc, Top brush, Vertical brushes, Lava-Foam(optional), Tri-color foam(optional), Soap(optional), Hot Wax(optional), Spotless(optional), Dryer(optional), Dryer(optional), etc.

### Features

- Lava-foam, led color-lightened foam liquid falling to the whole car
- Presoak, mud bug and dirties removal chemicals applied with dwell time
- HP Water, High pressure water washing around the vehicle removing all heavy solids
- Wheelmaster, wheel brushes system washes the wheels and tires by elbow stretching technology
- Soft cloth brush, A fine soft paint-protective brush gently spinning with foamy water and fraction
- HP Wax, A high-pressure wax applied from the HP lance, either high pressure or low pressure configurable
- Spot-Free Rinse, Apply spot-free rinse as a final rinse
- Dryer, 5.5kw powerful dryers supported with strong turbo impeller to dry the car without fabric touch on the paint.
- Anti-collision design, virtual eyes washing there to avoid collision happening due couple of vehicles washing in the tunnel



## Specifications

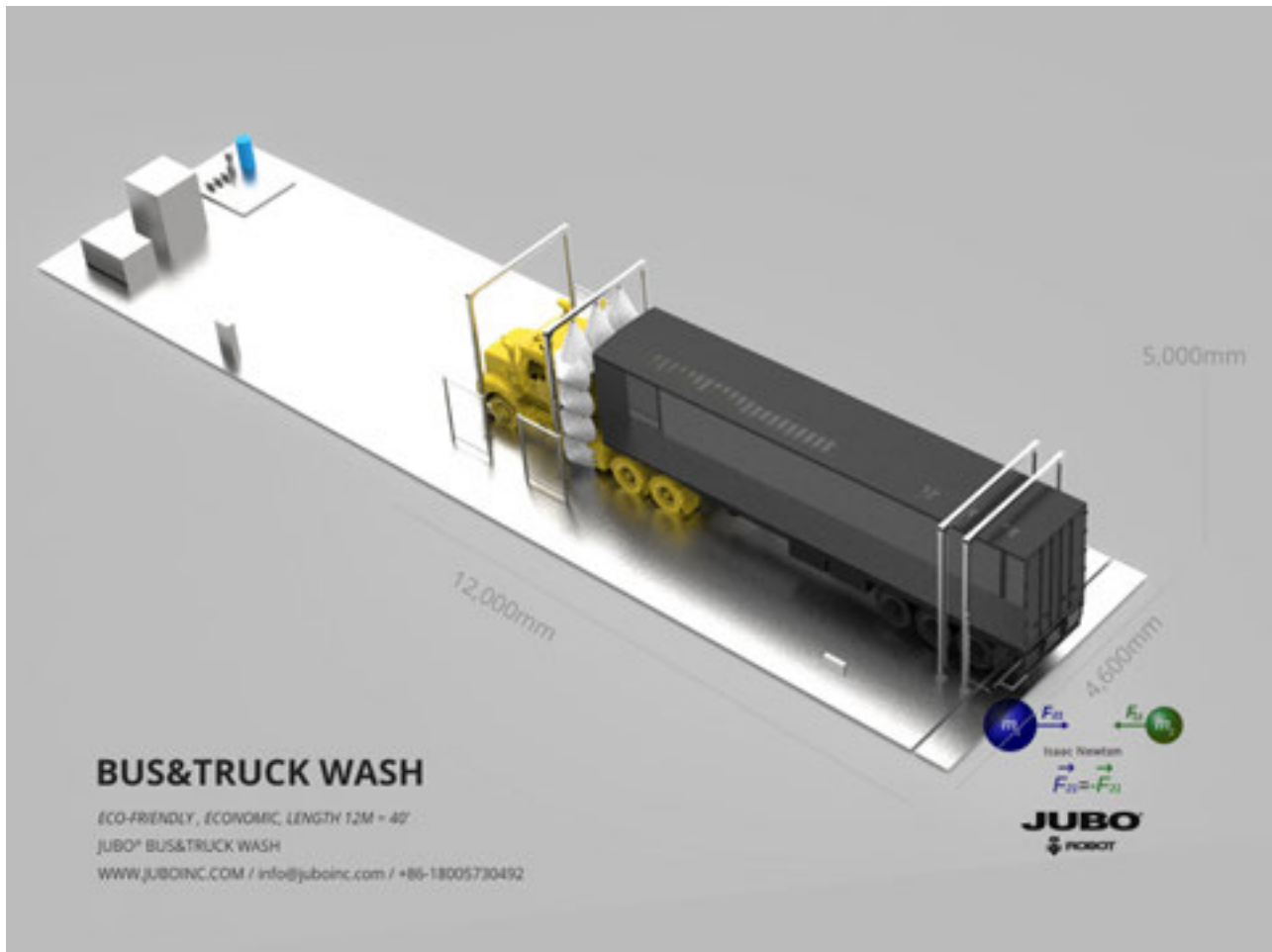
Electricity and power supply	3PHASE 380V 50HZ 45kW, 85A 3PHASE 220V 60HZ 45kW, 120A
Electrical system	French Schneider
Min installation dimensions	L12000 x W4600 x H5000mm L40 x W16 x H16.5ft
Max washing vehicle dimensions	L30000, x W4000 x H4500mm L100 x W13 x H15ft
Material	Hot dipped galvanized steel, Stainless steel 304
Pump	HP pump piston 130L/min 22kW = 30HP HP pump piston 110L/min 15kW = 20HP
Water pressure	100~130Bar, 240L/min adjustable
Control system	TAIWAN DELTA PLC
Wash speed	1-10minutes/vehicle, adjustable
Chemical consumption	0.02~0.08L/ vehicle, adjustable

## Deployment

Deployed for outdoor wash stations, several self-serve wash bays and single automatic car wash system will be a good idea to work together. Steel frame is necessary to support the components.





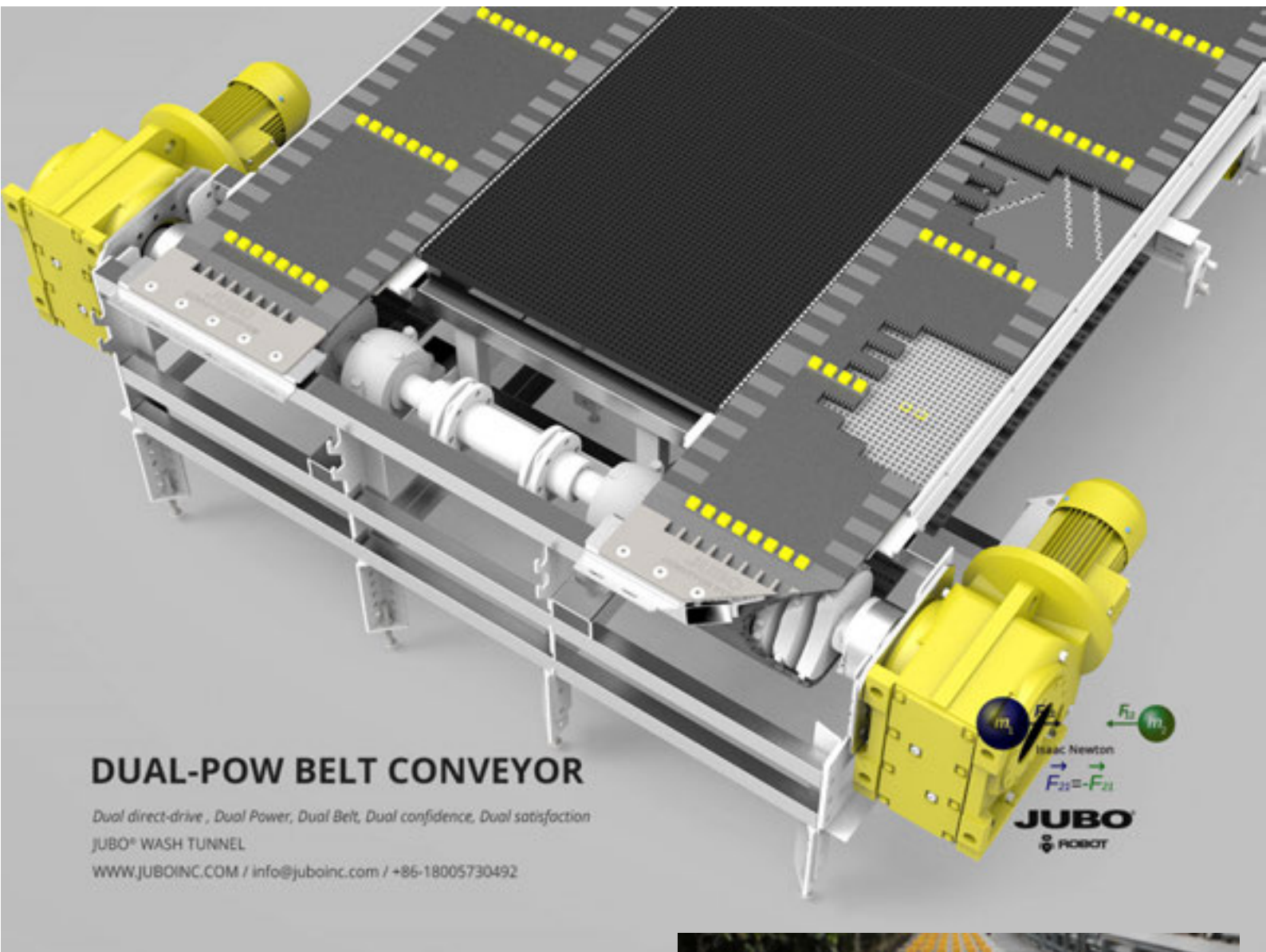


#### Application

- Vans
- Bus
- Truck
- Fleet
- Trucks and equipment
- School buses
- Tractor-trailers
- Military vehicles
- Semi-trucks
- Garbage trucks
- Oil mining vehicles
- Other odd-shaped

## Plastic belt conveyor

Model: DUPOW, Type: Plastic belt conveyor for wash tunnel



### Description

JUBO dual belt conveyor is perfect for large vehicles or hand washing / detailing applications. The extra wide conveyor belt makes loading easy and provides extra space for staff members to stand during service multiple cars can be stacked closely on the belt in the same tunnel, maximizing service speed and minimizing space used. Detailing / wash equipment can be stacked down the tunnel along the conveyor, close at hand when the car is carried past. The JUBO WASH TUNNEL DUAL PLASTIC CONVEYOR reduces the probability of vehicle damage and eliminates rollers and other high-maintenance components.

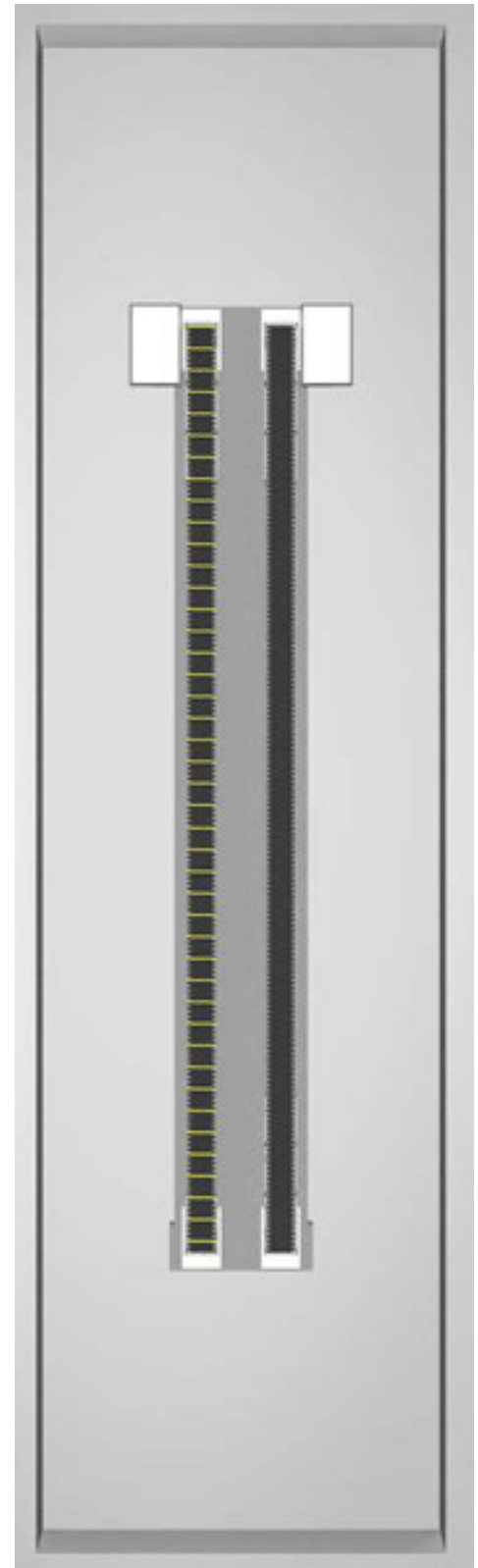
JUBO® VEHICLE WASH SYSTEM CATALOG V202202



The advantages of belt conveyor systems over traditional chain conveyors include easy loading & unloading, the ability to accept any size vehicle or tire width, no damage to tires, rims or suspension components and higher customer throughputs. Additionally, the incorporation of a dual belt conveyor system automatically future-proofs a tunnel against any problems associated with automatic braking systems

### Specifications

Electricity and power supply	3PHASE 380V 50HZ 4kW, 8A 3PHASE 220V 60HZ 4kW, 13A
Electrical system	French Schneider
Material	Hot dipped galvanized steel, Stainless steel 304
Pump	HP pump piston 130L/min 22kW = 30HP HP pump piston 110L/min 15kW = 20HP
Water pressure	100~130Bar, 240L/min adjustable
Control system	VFD, electric motor and gear box
Conveyor speed	0 - 10000mm/min 0 - 395inch/min
Belt material	Plastic DuPont
Belt width	600mm = 24inch
Belt length	12000mm = 40ft 24000mm = 80ft 36000mm = 120ft 48768mm = 160ft 60960mm = 200ft
Belt quantity	1 single 2 dual
Stud pusher distance	600mm = 24inch
Sprocket	Nylon (pa6) drive sprocket
Glide plates	Stainless steel 304
Shaft	Zinc-nickel coated drive-shafts and couplings
Pit Length	Vary along with belt length
Pit width	4600mm for drive area 2800 for belt area
Pit depth	800 - 1200mm 30 - 50inch
Vehicle tyres lateral distance	Min inner width 1100mm = 45inch Max outer width 2300mm = 90inch





## Features

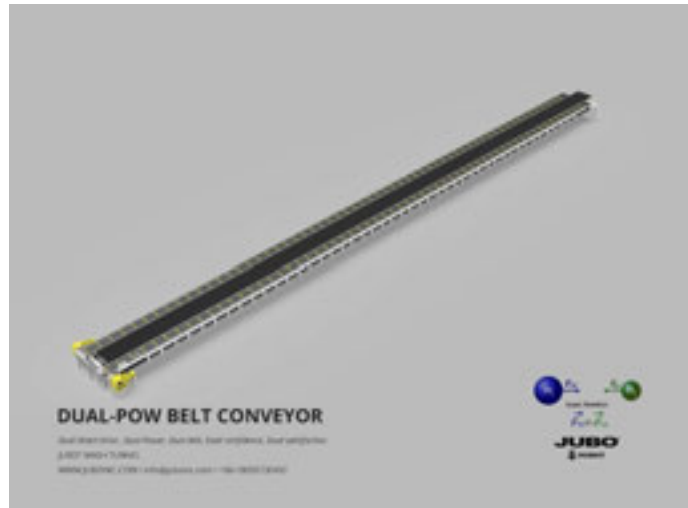
- Easy entry
- Flat, Silent
- Self-clean
- Self-lubricant
- Heavy-loading
- Flexibility
- Safety

## Deployment

Deployed for outdoor wash stations, several self-serve wash bays and single automatic car wash system will be a good idea to work together. Steel frame is necessary to support the components.

## Application

- Mini
- Sedan
- SUV
- MPV
- Pickup-Truck



## Contact

JIAXING JUBO CO., LTD

www.juboinc.com

+86-18005730492

info@juboinc.com